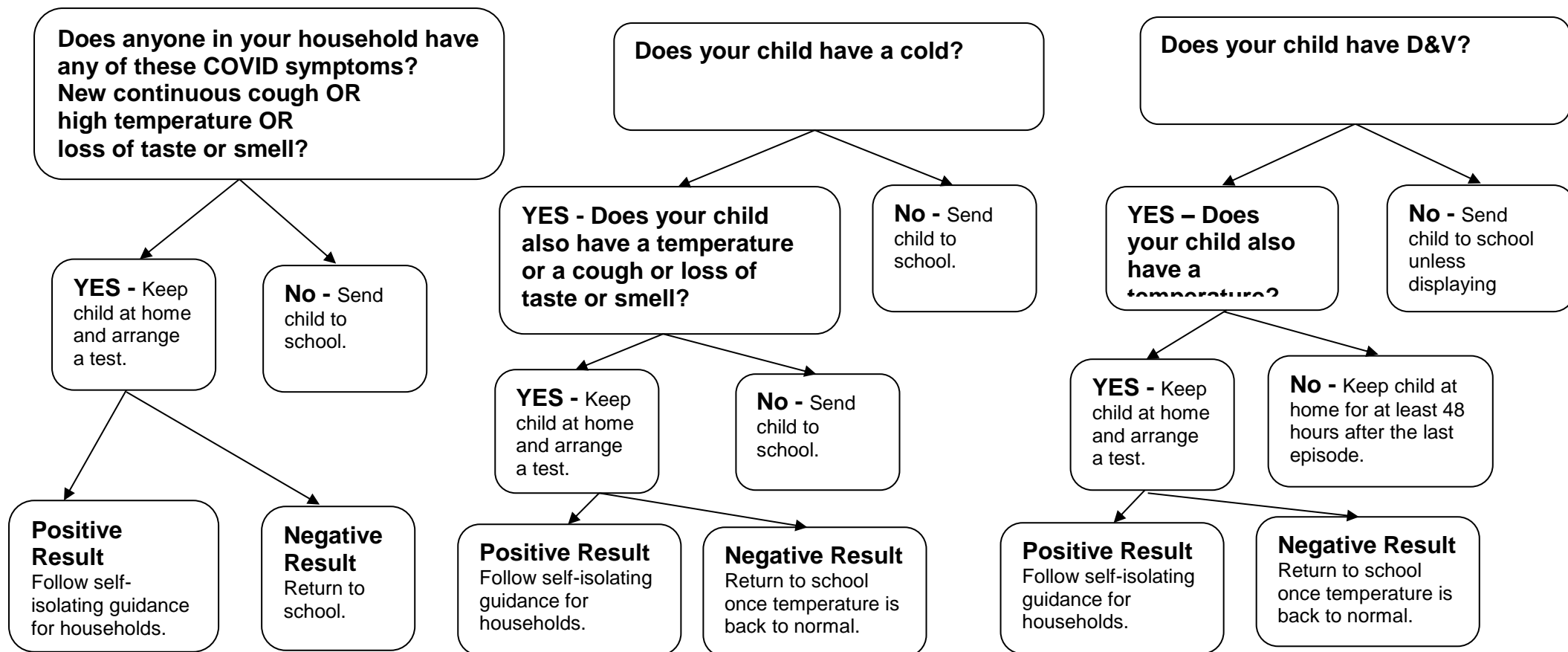


## Oliver's Battery Primary School

### Should I keep My Child At Home?



**You do not have to display all three of the common symptoms to stay at home. Having one of the symptoms means you should stay at home and get a test. Symptoms may be very mild but if your child, or anyone in your household, has any of them they must self-isolate for at least 10 days and get a test.**

<https://www.gov.uk/government/publications/covid-19-stay-at-home-guidance>